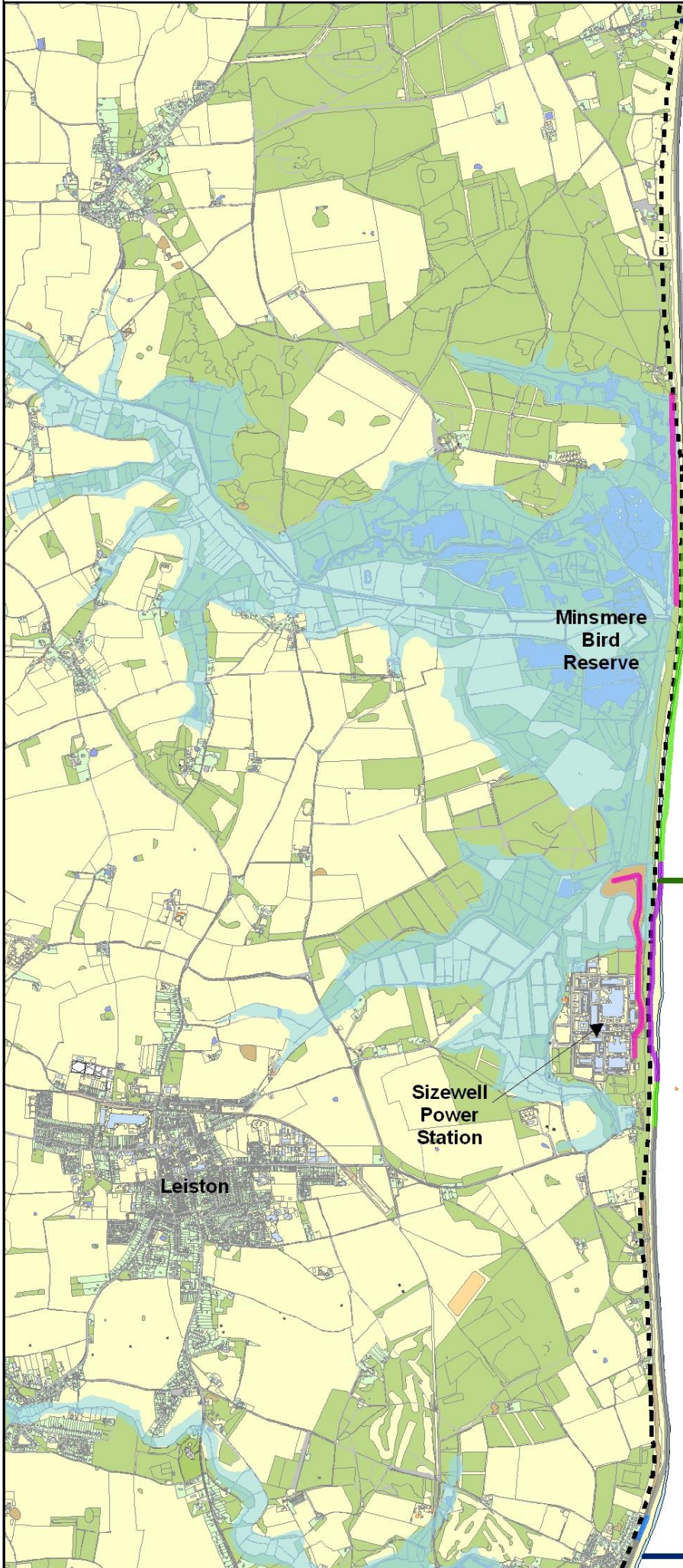


SMP7 Summary - Minsmere and Sizewell



MIN 12

PDZ 4

MIN 13

SMP Legend

— Policy Development Zones

— Management Areas

Defence Types

— Embankment

— Dunes

— Breakwater

— Cliff

— Groynes

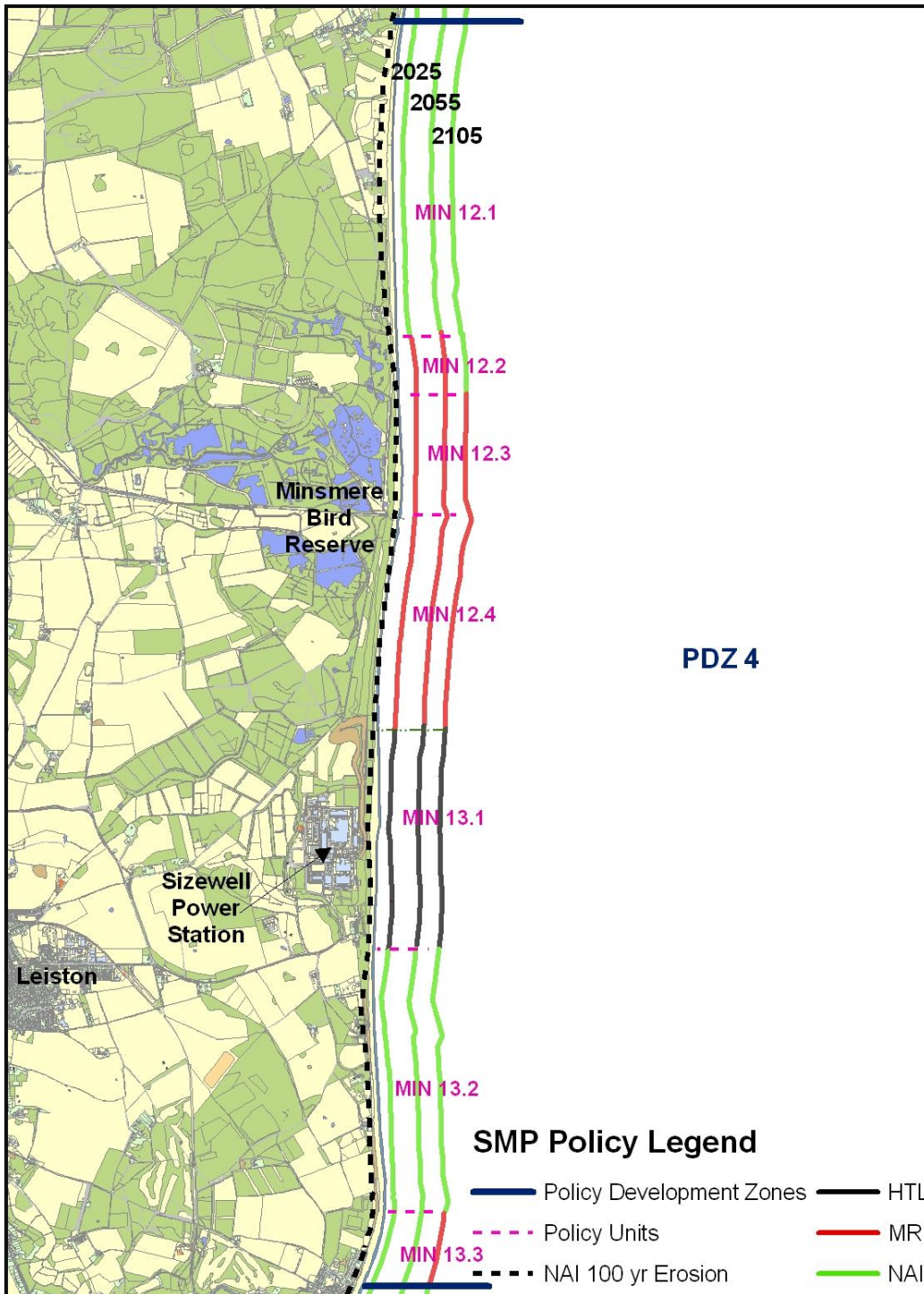
— Revetment

— Sea Wall

— Other (EA Resp.)

- - - 100 Year Erosion (NAI)

100 Year Flood Risk



Management Responsibilities

SCDC: Min 12.1; Min 13.2 to Min 13.3

SCDC Assets:

Min 13.3 Thorpeness gabion revetment

EA: Min 12.2 to Min 12.4

EA Assets:

None – Vegetated and clay cored dune defences

Others:

Min 12.2 / Min 12.3 Embankment (RSPB secondary defence line)

Min 13.1 Dunes and dune restoration fencing, embankment fronting Sizewell power station

SMP Information

Area vulnerable to flood risk: Approx. 8,806,000m²

No. of properties vulnerable to flooding: 34

Area vulnerable to erosion: Approx. 750,000m² (2105 prediction – no defences)

No. of properties vulnerable to erosion: 9

Vulnerable infrastructure / assets:

Caravan Park, RSPB reserve, Minsmere sluice outfall, Eastbridge marshes, Sizewell power stations, Sizewell belts, Sizewell marshes, Sizewell cliffs

SMP Objectives

- To maintain the location and safe operation of Sizewell Power Station and any future development of the site;
- To maintain the tourism interest of this area;
- To maintain biological and geological features in a favourable condition, subject to natural change, and in the context of a dynamic coastal environment;
- To support appropriate ecological adaptation of this habitat and in particular the Minsmere RSPB reserve;
- To maintain a range of recreational activities along the foreshore;
- To support adaptation of the Sizewell community and individual interests along the frontage to any change;
- To maintain or enhance the high quality landscape;
- To maintain in a sustainable manner Thorpeness as a viable coastal settlement and tourist destination, recognising its cultural and heritage significance;
- To promote ways to maintain access to and along the coastal path

Policy Unit ID	Policy Unit Name (Location)	Current Policy 0-20 yrs Short	Current Policy 20-50 yrs Medium	Current Policy 50-100 yrs Long	Policy Comments	Action Reference	Action Description	Activity	Theme	Action Lead Organisation	Key Partners	Primary Action Objective	Epoch for Action Delivery	Epoch Comments	Priority	Funding Source	Estimated Funding Requirement (£'000)	Implementation Cycle	Target Start Date (financial year)	Actual Start Date (financial year)	Target End Date (financial year)	Action Progress Status 2016	Action Progress Supporting Information 2016
Work Underway																							
MIN 13.1	Power Station and Village	HTL	HTL	HTL	Works in long term may be required	62	Review need for improvements to defences in association with Sizewell C proposals.	Asset Management and Maintenance	Protection	EDFE	Suffolk County Council, Natural England, Suffolk Coastal DC, RSPB, Environment Agency	Economic	0-20 yrs Short		High			Cycle 1 2012-2015	2012/13	2012/13	ONGOING	Progressing	Details of any proposed changes to the sea defences in the area of the Sizewell power stations will be presented as part of the any applications for construction of the Sizewell C power station. EDF report on the behaviour of the Sizewell cell annually via the annual Shore Defences Report.
ABP Associated British Ports, AOA Alde & Ore Association, AW, Anglian Water, BE Benacre Estates, BEG, Blyth Estuary Group, BM Bawdsey Manor, CG Community Groups, DEP Deben Estuary Partnership, EA Environment Agency, EH English Heritage, EPP Estuary Planning Partnership, GYBC Great Yarmouth Borough Council, KC Kessingland Community, LO Landowners, LRA Local Residents Association, NE Natural England, NNDC North Norfolk District Council, NT National Trust, RSPB Royal Society for the Protection of Birds, SCC Suffolk County Council, SCDC Suffolk Coastal District Council, SCF Suffolk Coast Forum, SCH Suffolk Coast & Heaths, SHT Southwold Harbour Trust, SSSC Shingle Street Settlement Company, SWT Suffolk Wildlife Trust, WDC Waveney District Council																							

Minsmere and Sizewell

Summary Discussion

The zone extends from just south of Dunwich Village to the access at the centre of Thorpeness village. The whole frontage is dominated by the two areas of high ground, the Dunwich and Minsmere Cliffs to the north and the Sizewell Cliffs and Thorpeness headland to the south. The coast between is cut by the extensive valley of the Minsmere River, which includes a smaller side valley behind Sizewell.

In the nearshore area there are two banks running parallel to the shore, the Dunwich and Sizewell banks to the north and south respectively, with a deeper channel running between the shore and the banks. This deeper area changes in level such that the banks are at times nearly continuous and at other times relatively separate. There has been a trend for the banks to amalgamate since the mid-1800s and to grow northward while also moving inshore.

The shore over the whole area is typically that of a relatively sandy lower beach with coarser shingle above, although this varies to a degree along the shoreline. In general the coast appears quite straight. However, on the ground there is significant, though quite slight, variation in the alignment. Most noticeable is the tendency for the coast at Minsmere to be held forward of the general alignment, with the apex of this tending to be at the position of the sluice. This also coincides with the lower section in the offshore banks and is potentially associated with the centre of the Minsmere River valley.

The backshore also varies in position and character. To the northern end are the steep Dunwich Cliffs, with little upper beach berm which is presently relatively well vegetated. Further south there are areas of the more gently sloped cliff with a reasonable width of beach berm between the toe of the slope and the crest of the beach.

The plan for this area is to allow the natural functioning of the coast as far as possible.

The long term impact of the plan will be increased flooding to the Minsmere valley. The coast is eroding to the north and this would continue, proving valuable sediment to the system. Erosion across the valley and in the area of Sizewell is significantly less. The plan allows for local management of the main Minsmere frontage but with the long term intent for managed realignment. The Power Station would continue to be defended and this is not seen as having a significant impact on the frontage to the north over the period of the plan. However, joint planning needs to be developed to ensure a compatible defence approach over the whole area.

There may in the longer term be the potential loss of properties along the Sizewell cliffs and at Thorpeness. The intent of the plan would not be to preclude careful management of the coastal processes. However this would need to be considered on a case by case basis, within key constraints identified with respect to the natural function of the full coastal length and the potential impact on nature conservation interests.